

36

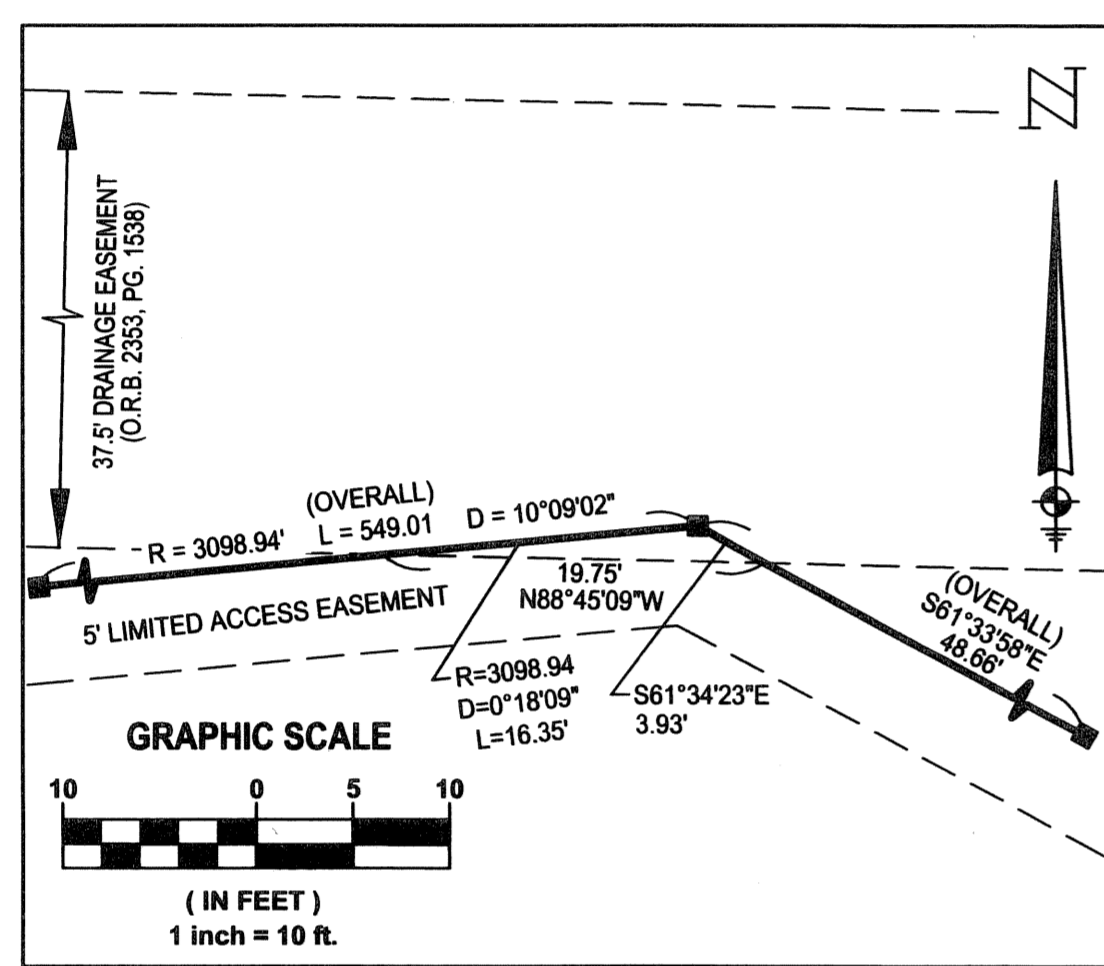
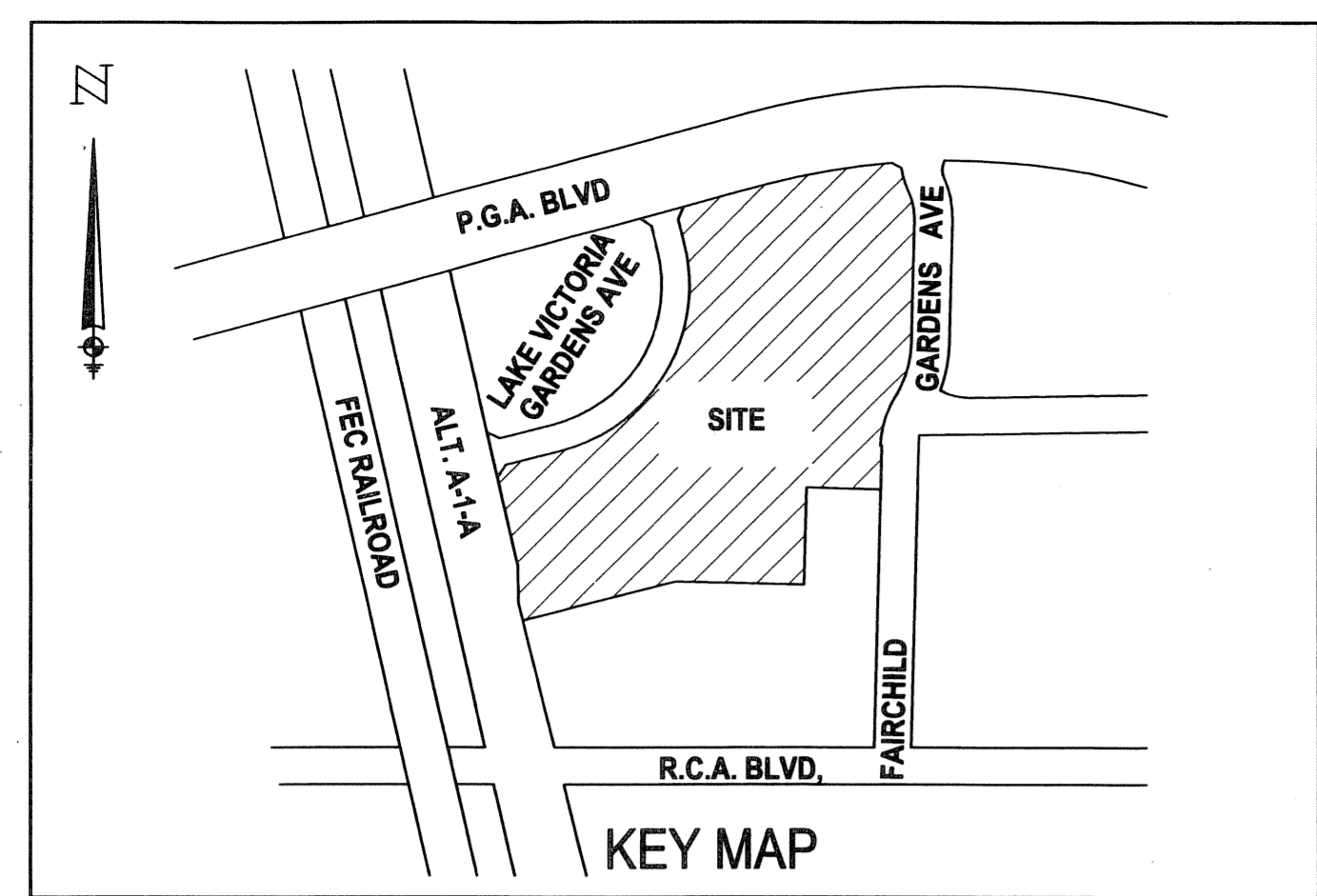
STATE OF FLORIDA  
 COUNTY OF PALM BEACH  
 This plat was filed for  
 record at \_\_\_\_\_ M. this \_\_\_\_\_ day  
 of \_\_\_\_\_, 2000 and duly  
 recorded in Plat Book No. \_\_\_\_\_  
 on Pages \_\_\_\_\_ thru \_\_\_\_\_.

Sharon R. Beck  
 Clerk and Comptroller

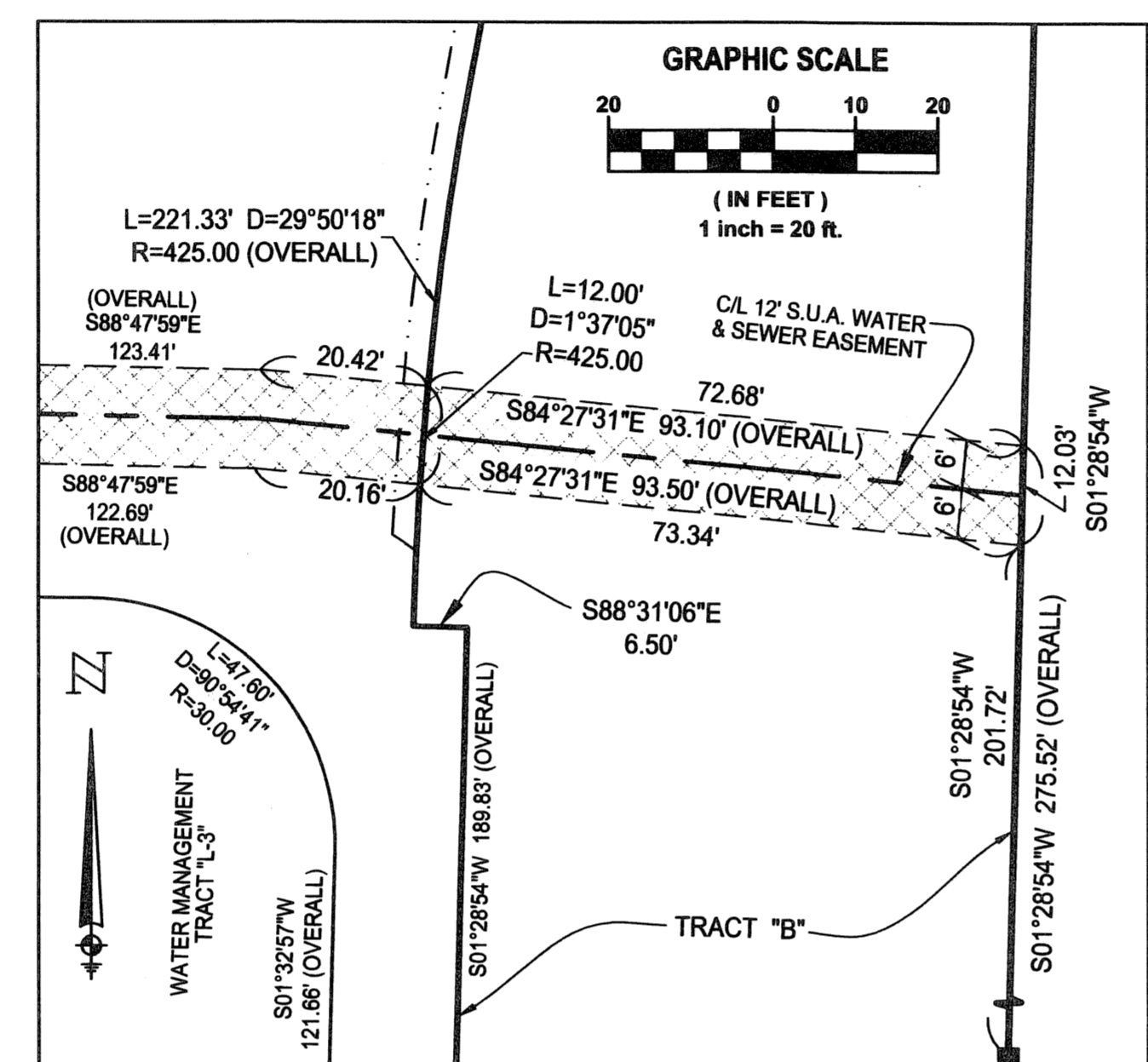
By \_\_\_\_\_ D.C.

# LEGACY PLACE COMMERCIAL

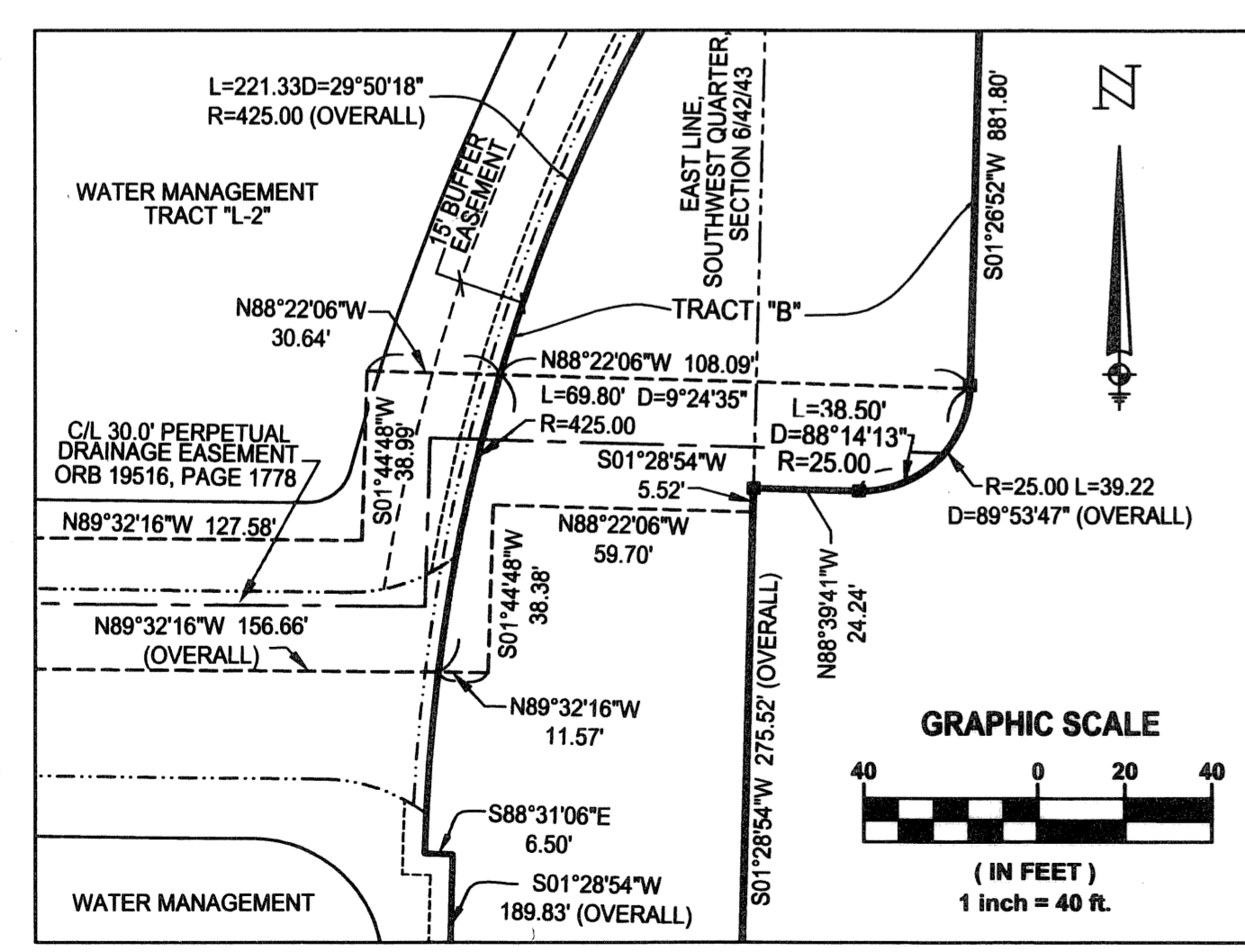
BEING A REPLAT OF A PORTION OF PARCEL 1, LEGACY PLACE, AS RECORDED IN  
 PLAT BOOK 90, PAGES 119 THROUGH 121, PUBLIC RECORDS OF PALM BEACH COUNTY, FLORIDA  
 LYING IN SECTION 6, TOWNSHIP 42 SOUTH, RANGE 43 EAST  
 CITY OF PALM BEACH GARDENS, PALM BEACH COUNTY, FLORIDA  
 SHEET 8 OF 8 JULY, 2006



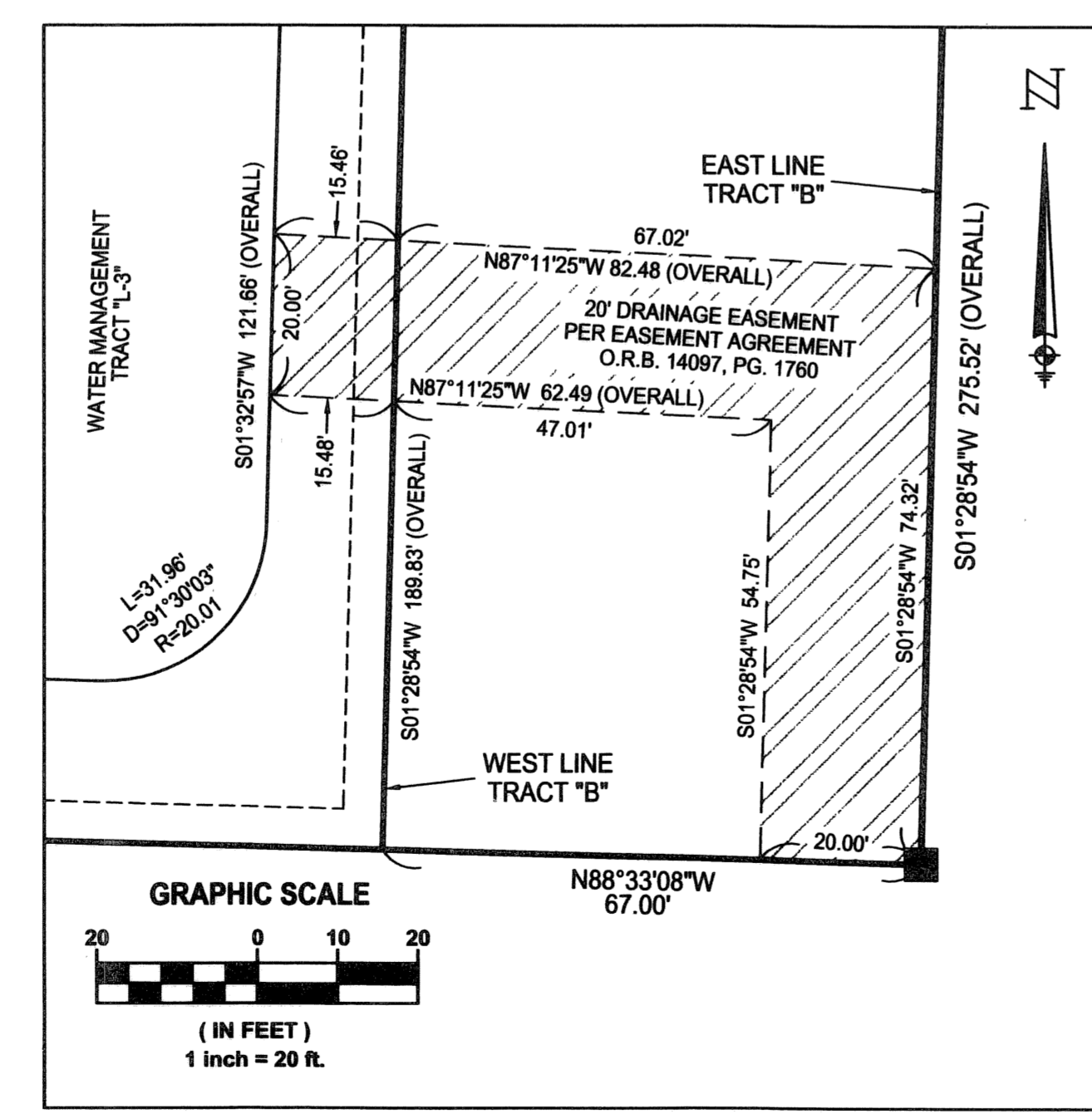
DETAIL 'A'  
 37' DRAINAGE EASEMENT  
 (O.R.B. 2353, PG. 1127)  
 SEE SHEET 3 OF 8



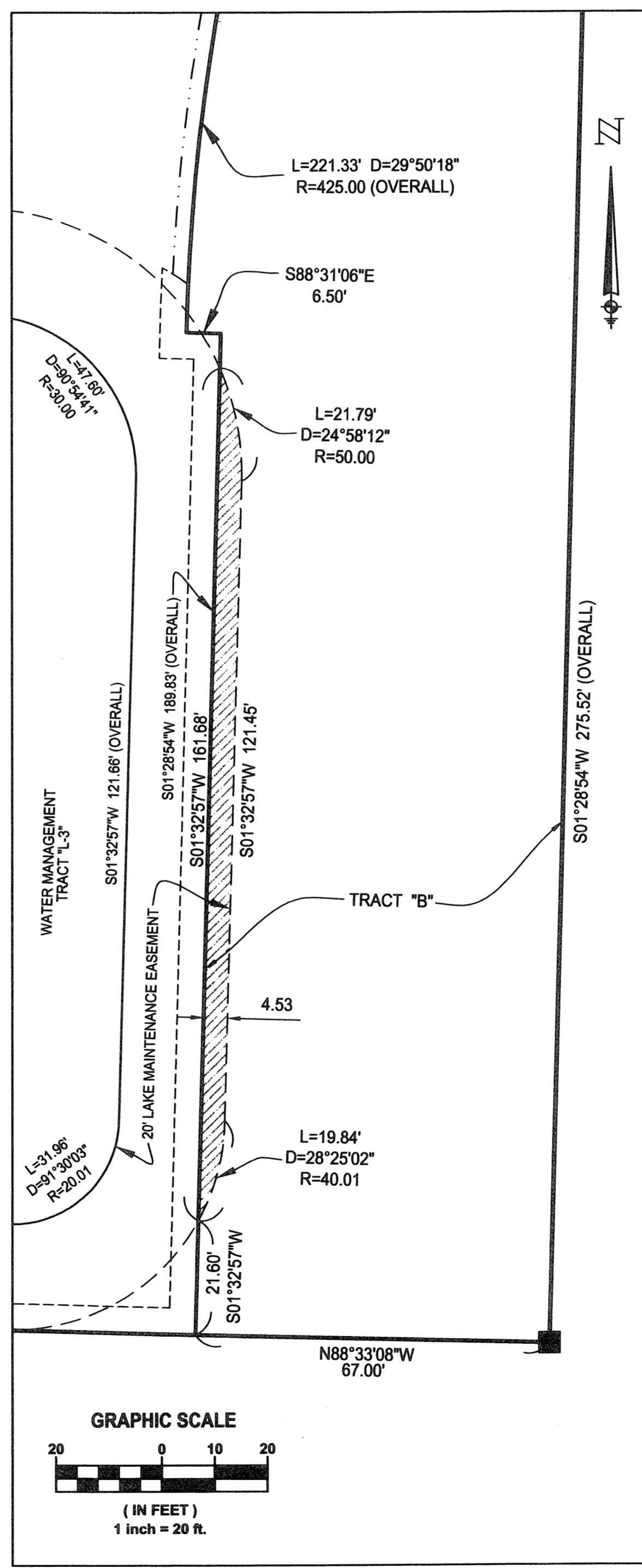
DETAIL 'C'  
 12' S.U.A. WATER AND  
 SEWER EASEMENT  
 SEE SHEET 5 OF 8



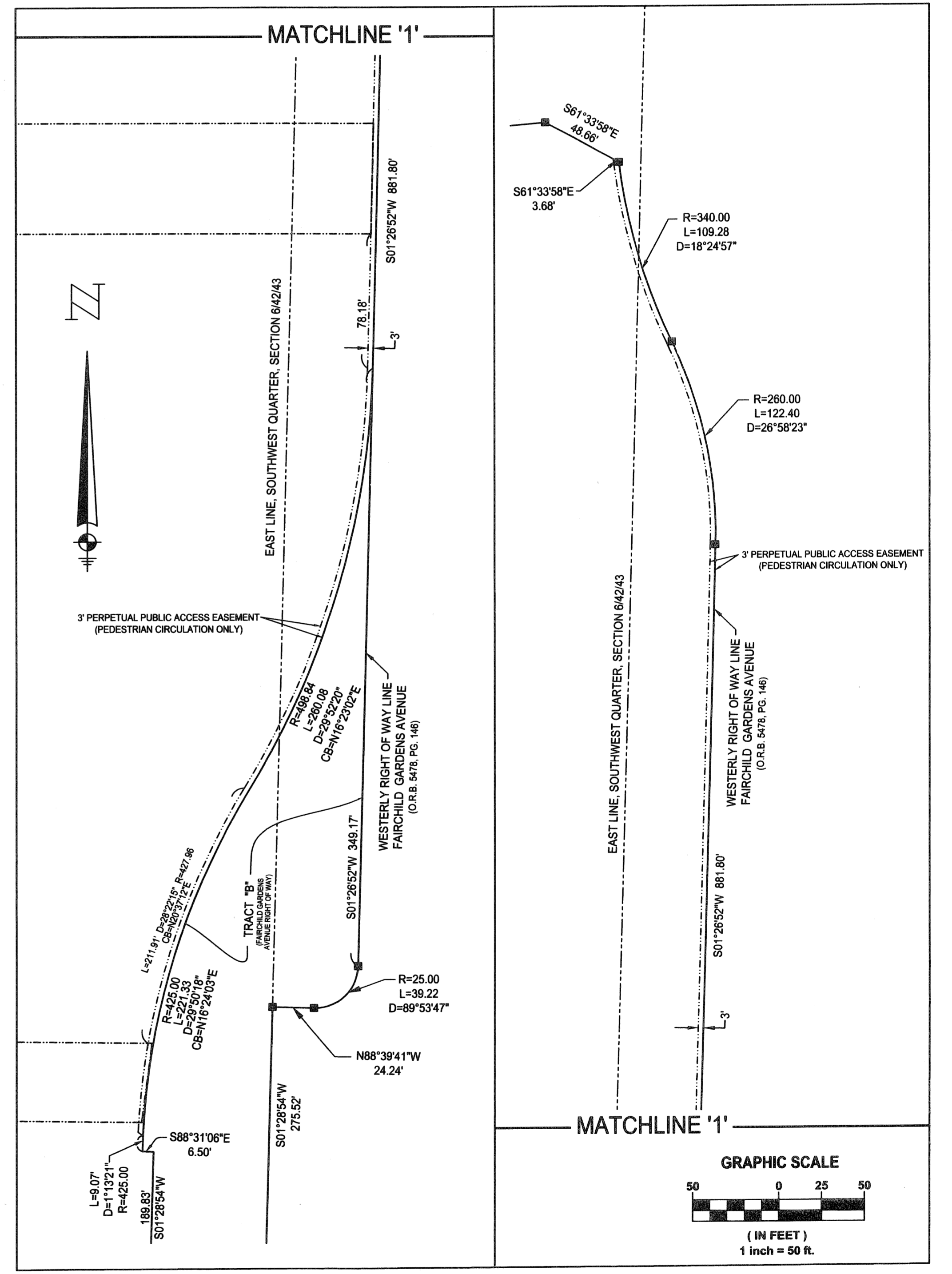
DETAIL 'B'  
 30' PERPETUAL DRAINAGE EASEMENT  
 (O.R.B. 19516, PAGE 1778)  
 SEE SHEET 5 OF 8



DETAIL 'D'  
 20' DRAINAGE EASEMENT  
 PER EASEMENT AGREEMENT  
 (O.R.B. 14097, PG. 1760)  
 SEE SHEET 5 OF 8



DETAIL 'E'  
 20' LAKE MAINTENANCE EASEMENT  
 SEE SHEET 5 OF 8



DETAIL 'F' OF 3' PERPETUAL  
 PUBLIC ACCESS EASEMENT  
 SEE SHEETS 3-5 OF 8

**LIDBERG LAND SURVEYING, INC.**

675 West Indian Town Road, Suite 200,  
 Jupiter, Florida 33458 TEL. 561-746-8454

CAD R:\AUTOCAD2000\064243\00-154-SEMBLER\DWG\00-154-306.DWG			
REF			
FLD	FB.	PC.	JOB 00-154 (306)
OFF	S.F.B.		DATE 02/03/2006
CKD	D.C.L.	SHEET 8 OF 8	DWG 000-154P